



**ADA ENTERPRISES, INC.**  
Dura Trac Swine Flooring

# ***Product Catalog***



Plastisol Coated Steel Animal Products Since 1974





# Flooring You Can Trust

Since 1974, ADA Enterprises has been leading the agriculture industry with quality products made to increase production, thereby increasing your bottom line. We believe that animal health and safety are vital for a profitable swine operation. The quality of our products and our customer service are second to none, which is evident in our many loyal and long-term customers. Dura Trac flooring is designed and built for your specific needs. Whether remodeling or building new, we have a floor solution for you. Our friendly and knowledgeable sales staff will work with you to design a flooring system specific to your needs.



## A Proven Process

Dura Trac flooring is 100% plastisol coated with no exposed steel, therefore rust will not permeate through the coating. The process we use starts with prime steel. After cleaning and priming the welded floor, it is preheated to prepare a surface perfect for accepting the plastisol coating. The steel is then fully immersed in the liquid plastisol. Finally, the coated floor is cured in an oven for an extended time at high temperatures.

The oven-cured surface is smoother and more resistant to bacterial and fungal growth than other floorings. Uniform curing creates stronger adhesion to the metal for a tougher surface with greater wear resistance. The strong Dura Trac flooring has been proven to aid traction and reduce floor-related injuries and is USDA accepted.

Phone: 641-324-1093 • Toll Free US & Canada: 800-533-6033 • Email: [sales@adaent.net](mailto:sales@adaent.net) • Web: [www.adaent.net](http://www.adaent.net)





## One-Year ROI\*

### Dura Trac vs. Competitor Flooring

#### 1. Faster Installation

- Time Reduction: 90% faster install
- Savings: \$121.50 saved per crate.

#### 2. Reduced Power-Washing Time

- Time Reduction: 32% less time spent on power-washing.
- Savings: \$88.50 saved per crate per year.

#### 3. Lower Pre-Wean Mortality

- Reduction: 4% drop in pre-wean mortality.
- Profit Gain: \$42.50 per crate per year.

**One-Year return on investment over competitor flooring:**  
**\$252.50**

\*Based on 2024 USDA averages for labor costs, weaned pig profit, and installation study vs. hard plastic flooring.



### Antimicrobial Plastisol by ADA Enterprises

Dura Trac flooring features antimicrobial plastisol, scientifically tested and proven by a world-renowned laboratory to inhibit 99.99% of *E. coli* and *Salmonella enteritidis* activity.

This built-in protection enhances sanitation effectiveness without altering standard cleaning practices, offering a significant boost in hygiene in your facility.

#### Why choose Dura Trac flooring?

- The only flooring solution with built-in microbial-level protection.
- Reduces risk of disease transmission in high-traffic areas.
- Contains no antibiotics - uses safe, effective antimicrobial agents to inhibit microorganism growth. <sup>3</sup>





# Dura Trac Swine Flooring

## HEALTH • DURABILITY • TRACTION

### DURAbility You Can Count On

All Dura Trac flooring is specifically designed to help keep animals warm, clean, dry, and comfortable. Profitability and animal health go hand in hand, and animals are healthier when these conditions are met. The mesh allows most of the fecal matter to fall through eliminating bacteria build-up, making it easier and more efficient to clean the floor.



### Frequently Asked Questions:

#### How does the price of Dura Trac compare to other flooring?

*The installed cost of Dura Trac is very similar to some of the cheaper alternative flooring systems, but with better results once installed.*

#### What does installation involve?

*Installation is very simple - just set the floors in place.*

#### How quickly is the installation process?

*Customers have told us installation takes as much as 1/10<sup>th</sup> the time of alternative systems! The remodeling of farrowing rooms needs to start with a flooring system before adding crates, waterers, heat mats/lamps, etc. For this reason, the fast installation of Dura Trac flooring is preferred. It can take days off the remodel time needed for each room.*

#### Do we need to size the flooring with expansion and contraction in mind?

*With Dura Trac flooring there is no concern for the complicated "coefficient of expansion" that is needed with properly installing the cheaper plastic clip-together products.*

#### From Tom Stensrud, President/CEO:

*"Thanks to the quick and easy installation of Dura Trac flooring, remodel downtime is drastically reduced - getting your operation back on track fast. Some customers have completed remodels in just one day, avoiding disruptions to farrowing cycles and staying right on schedule."*



### A Delivery System Kit

*"Farrowing barn renovations don't have to mean lost production time. Our 'kitted' delivery system, paired with Dura Trac flooring, streamlines installation—built on the same Lean Manufacturing principles that drive efficiency in our factory.*

*This photo showcases a fully assembled farrowing room row, designed to easily roll through standard walk-in doors and down facility aisles. With this system, customers have completed full room remodels in just one day—keeping their farrowing cycles right on schedule with zero downtime."*

Thomas A. Stensrud, President/CEO

# Dura Trac Clearspan Creep Sides

## Flooring for Healthy Sows and Piglets



Woven wire creep sides with cast iron centers.



Welded rod creep sides with cast iron centers.

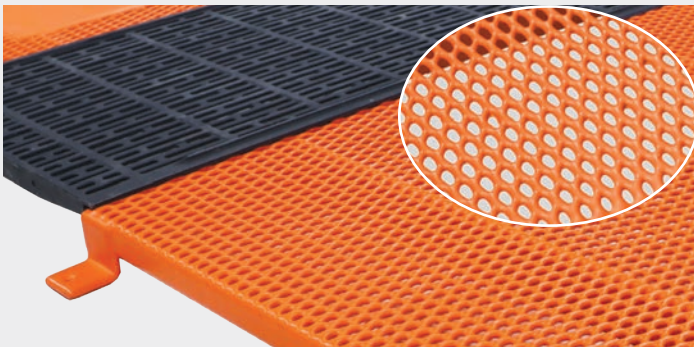
### Cast Iron Sow Section Options

#### Traditional Style Option:

- Sizes: 24" x 42" and 24" x 48" construction
- side traction ridges

#### Semi -Solid Feed-Saving Option: (NEW!)

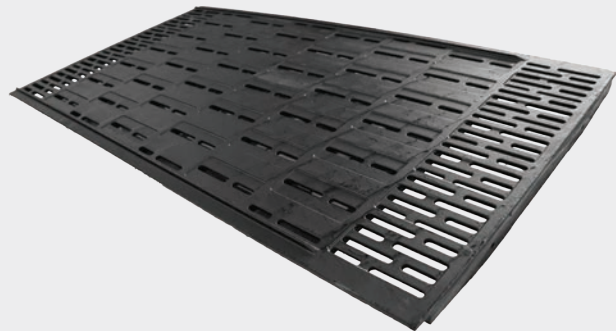
- Size: 24" x 48"
- Compatible with crates 90" or longer
- Semi-solid surface design to reduce feed waste
- side traction ridges



Expanded metal creep sides with cast iron centers.



Traditional Cast Iron Option



Semi-Solid Feed-Saving Cast Iron Option

## Clearspan Creep Side with Cast Iron Center

Enhancing Comfort, Health, and Hygiene for Sows and Piglets

- **For Piglets:** The creep side flooring keeps them warm and dry, ensuring optimal comfort as they grow.
- **For Sows:** The durable cast iron center maintains a cool and comfortable space for the sow, promoting her well-being.
- **Efficient Cleaning:** The plastisol-coated metal mesh flooring allows waste to fall through easily, reducing bacterial buildup and making cleanup quicker and more efficient.

## Advantages of the Clearspan Creep Side with Cast Iron Center

The Clearspan Creep Side with Cast Iron Center offers a unique combination of durability, comfort, and efficiency for farrowing environments. This fully self-supported flooring system eliminates the need for additional structural support, simplifying installation and reducing overall costs. The cast iron center helps keep the sow cool, while the creep side provides piglets with excellent traction and a warm, dry surface to promote health and safety. Designed with flexibility in mind, the system can be customized to fit your specifications. Its ease of installation also helps minimize labor time and downtime, making it a practical and high-performing solution for modern swine operations.



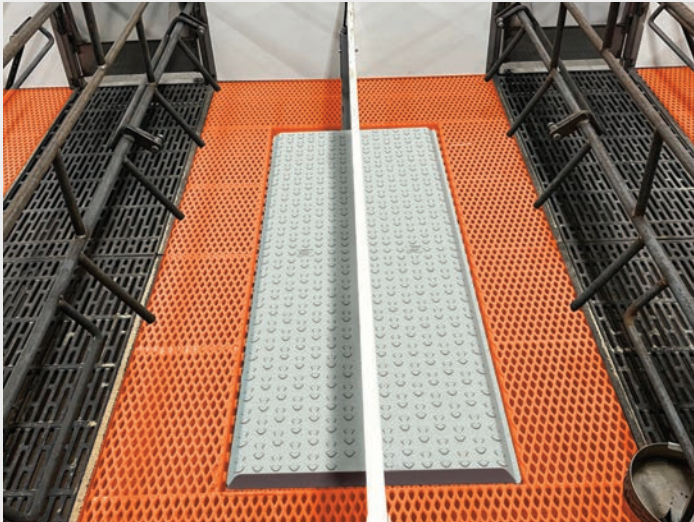


# Dura Trac Clearspan

## Convenient Options to Customize Your Floor

### Recessed Area for Heat Mat

The creep area shown below has a modified recessed area for the customer's heat mat without adding hardware. Piglets have easy access to the heat mat, but the sow is not able to cause damage by kicking it.



### Coated Solid Plate to Better Utilize Heat Lamps

Retain heat from heat lamps and reduce drafts on the piglets with the welded-on solid plate. Piglets stay continuously dry and warm. Plus, no more hassle of sanitation concerns related to rubber mats.

Texture can be added to aid traction.



**Clearspan Option:** Open end for easy cleaning of the alleyway.



### Hot Water Heat Plate

The Dura Trac Hot Water Heat Plate can be used with your existing boiler system to give uniform heat in the creep area. It is flush-mounted for durability.



The bottom side of the hot water heat plate.

Standard sizes: 12-inch x 48-inch and 24-inch x 48-inch. Custom manufactured to fit most existing installations.



# Dura Trac Clearspan Creep Sides

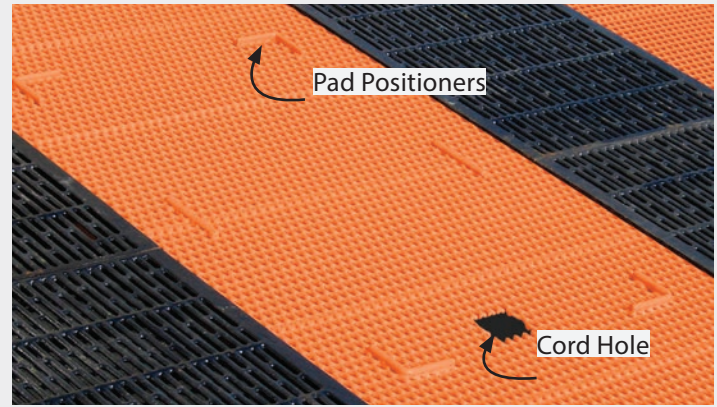
## Optional Flooring Modifications



Many convenient options are available with Dura Trac Clearspan Creep Sides, including custom notches, pad positioners to secure heat mats, mounting tabs, and feet to elevate the floors above the alleyway. There are many available options for modifying the Clearspan Creep Side flooring.

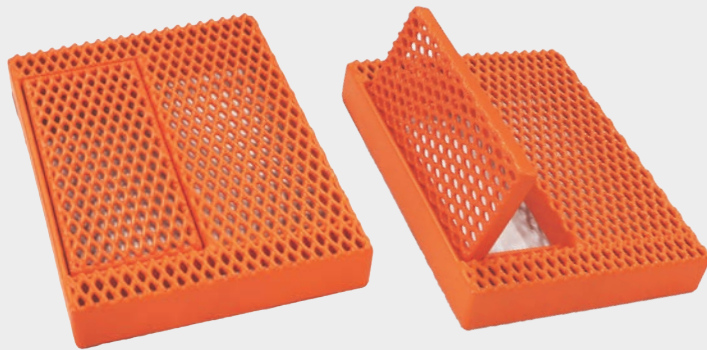


**Cast Iron Center** will keep the sow cool and comfortable. Cast iron sizes available are 24-inch x 42-inch and 24-inch x 48-inch. The molded ridges on each side provide additional traction for the sow, while still allowing the front and back 6 inches to be scraped.

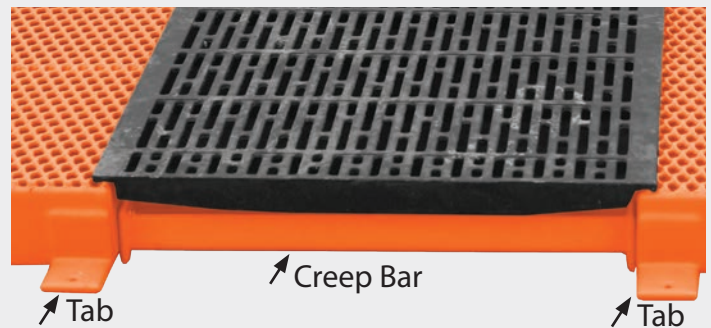


**Pad Positioners** are an inexpensive way to help secure the heat mat and lessen the likelihood of a sow kicking the heat mat out.

**Cord Holes** can be cut in the flooring to allow heat mat cords to exit the crate with minimum exposure to the pigs.

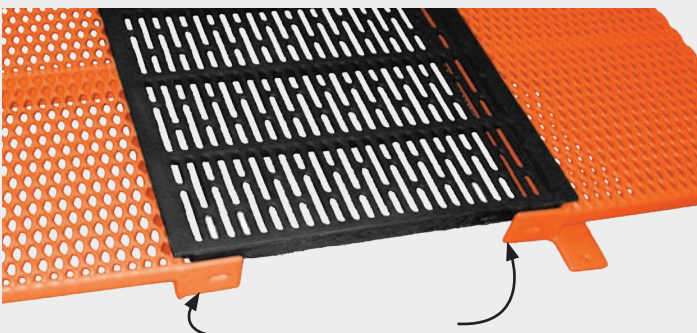


**Pit Access Trap Door** is removable, making it easy to take out your pit plug, pitch manure, or for manure treatment. Custom-sized to suit your needs with any style of self-supported flooring.



**Tabs** will easily fasten the creep side floors to a concrete surface.

**Creep Bar** holds the creep sides at a distance from each other to keep the cast iron in position.



**Side Tabs** used to hold cast iron in place and for farrowing crates that bolt from the side.



**Clearspan Option:** Open end for easy cleaning of the alleyway.

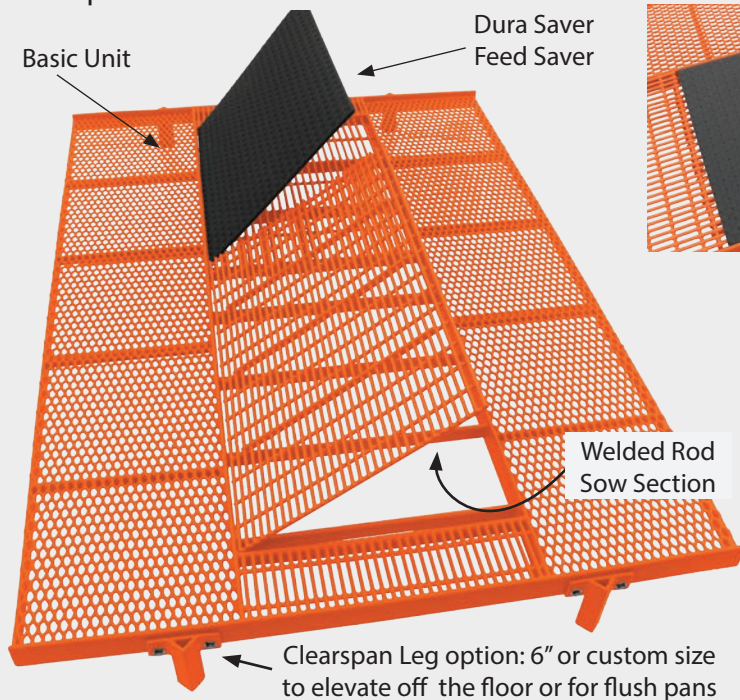




# Dura Trac Clearspan Farrow Complete

## Healthy Sows + Increased Weaning Weights = Larger Profit

Dura Trac is setting the standard in quality animal flooring! All floors are completely plastisol coated to conserve the pig's body temperature and reduce stress caused by cuts and bruises. Designed for traction, Dura Trac floors will reduce floor-related injuries. The floors are easy and efficient to clean, eliminating bacteria buildup.

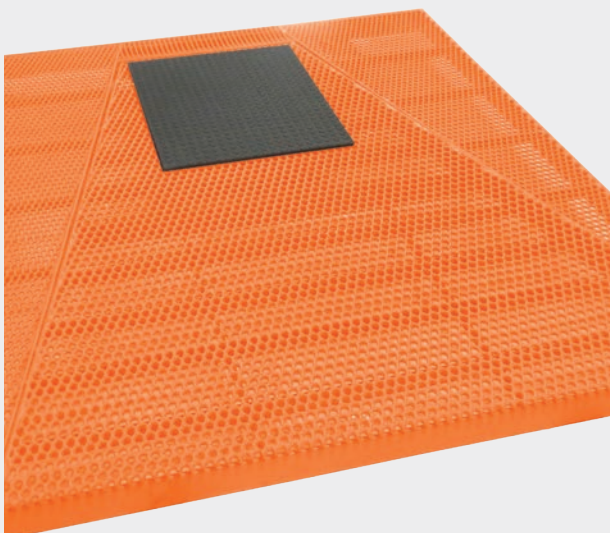
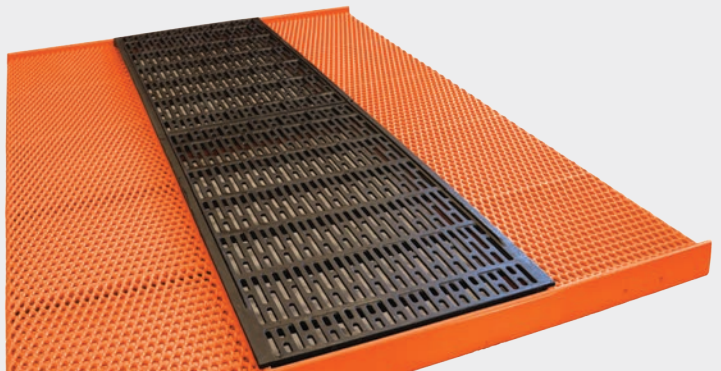


### The Dura Trac Clearspan Farrow Basic Unit Complete

- Includes a sow section with traction bars, and a Dura Saver with hardware.
- Is completely self-supported.
- 24-inch wide sow area has a 1-inch center rise to reduce crushing from the sow.
- Allows newborns easier access to underside nipples.
- Replaceable areas under the sow minimize re-modeling and maintenance costs.

### Clearspan Farrow with Cast Iron Center

The one-piece plastisol-coated farrowing floor has an open center for two cast sections under the sow. The cast iron sections are available in 24" x 42" and 24" x 48", and have ridges on each side for added traction. This allows for the cast to fit floors with lengths of 7', 7'6", and 8'. The floor pictured on the right is a 5'x7' raised Clearspan farrow basic unit for cast iron.



### New for Turn-Around Crates!

The Clearspan Turn-Around Farrow is designed with a replaceable 'V' shaped center of durable, completely plastisol-coated, expanded metal.

Dura Trac Clearspan Farrow flooring designed for turn-around crates is similar to the Dura Trac Clearspan Farrow Complete, which has been a customer favorite for years. The Clearspan Turn-Around Farrow floor is completely self-supported. No additional support is necessary. Custom-built to your size requirements.

The Dura Saver feed saver is an excellent wear-saver to place in front of the sow. Attach to the floor with feed saver hardware.



# Dura Trac Original Farrow Floors

## Great for New Building and Replacement Projects

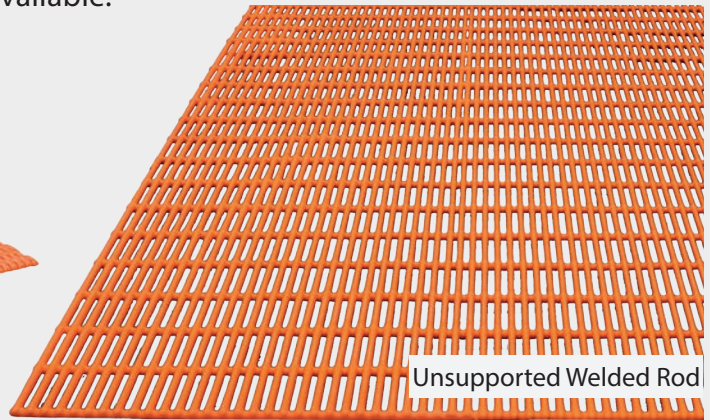


### Benefits of Original Flooring

The Original floor is made to use with your supports.\* An excellent choice for both new buildings and replacement flooring. Standard and custom sizes are available.



Unsupported Expanded Metal



Unsupported Welded Rod

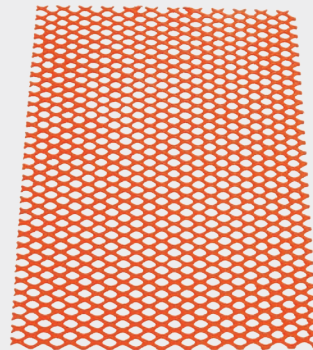
Custom options such as perimeter rod, notching, and holes are available. Mesh styles include expanded metal and welded rod. All floors are coated with plastisol after cutting - no exposed metal.

The Dura Saver feed saver is also an option. It bolts on easily with Dura Saver hardware.

### Proper Support for Original Dura Trac Floors

Supports must run laterally across the short way of the opening. The following minimum requirements apply:

- All Farrowing floors - 8 inches apart under the sow and 16 inches apart in the creep areas
- All Nursery floors - 16 inches apart
- Finishing expanded - 16 inches apart



### Dura Patch Piece

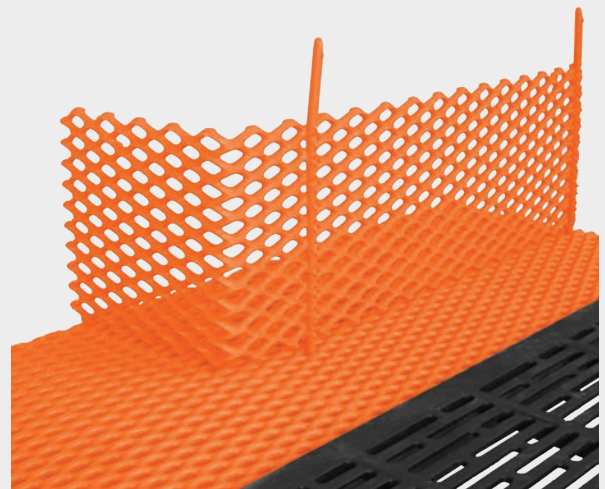
The 30" x 24" coated expanded metal section will cover holes in most types of existing floors that are beginning to show wear. No sharp edges! Just bolt down over the damaged area.

### Split Suckling Divider

The completely plastisol-coated split suckling divider is a simple product that will separate the larger piglets from the smaller ones. This provides all piglets with a shared chance at nursing. The divider quickly lifts in and out of almost all farrowing floors including our competitor's flooring. With bars on both sides, you can put them in any corner of the flooring. No hardware is necessary.

### Benefits of the Split Suckling Divider

- Decrease piglets' pre-wean mortality with an equal nursing advantage.
- Save time and money with this durable coated steel mesh divider that will last through countless litters.
- Eliminate the cracking, breaking, and replacing that is common with alternative split suckling methods such as pails and plastic totes.
- Easy to power wash! It can be left in the flooring when it's time to power wash the area.
- The size is 14" x 30" with a height of 10" not including the bars used to place it on the floor. An excellent accessory to Dura Trac flooring for the farrowing barn.







# Dura Trac Clearspan Nursery

## Promoting Healthy Pigs Through Design

### Reach Market Weight Sooner

Because of the 1/8+ inch of plastisol coating, the Dura Trac Nursery floors stay warm and dry which helps in conserving the body temperature of the pigs. The floors are designed for traction, therefore reducing floor-related injuries. Your pigs will reach market weight sooner if they are in a safe and healthy environment. Dura Trac flooring provides the surface they need to grow and thrive.

The Clearspan Nursery floor is completely self-supported in all directions and no additional support is required. The frame and floor are welded together and completely plastisol (PVC) coated to prevent rust and corrosion.

### Dura Trac Clearspan Flooring

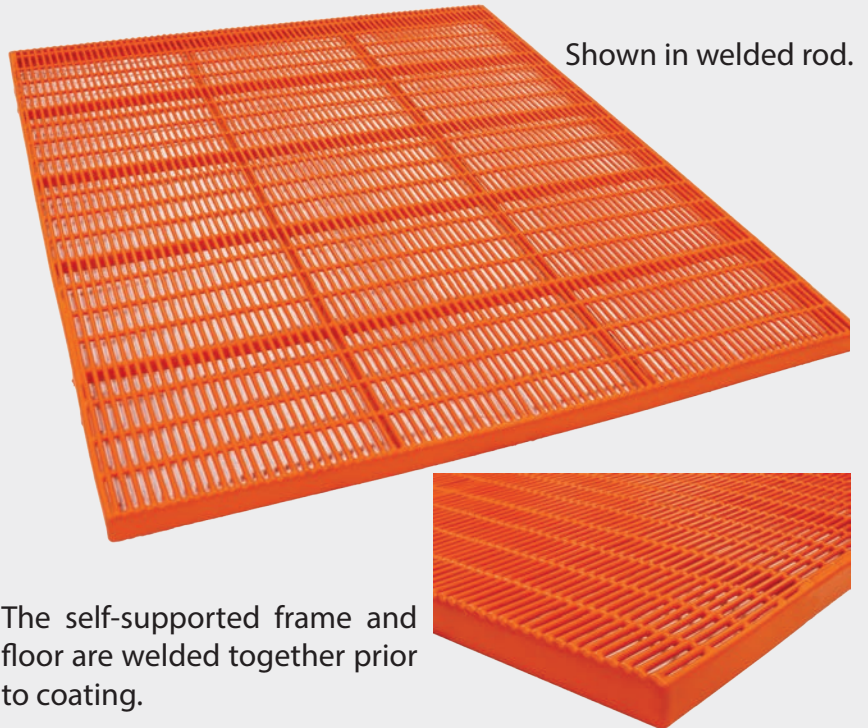
Custom Clearspan nursery floors can be ordered in sizes up to 10 feet long and up to 6 feet wide.

Convenient options are available to customize the floors to meet your needs, including:

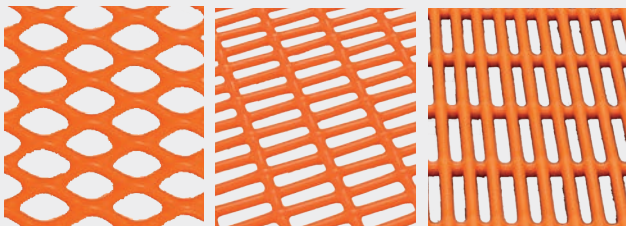
- Open end for easier cleaning of the alleyway
- A trap door for access to the pit below without having to remove the complete penning system. (See page 7)

Dura Trac Clearspan Nursery Barn Flooring supports pigs up to 100 pounds each. Custom flooring can be manufactured for heavier weights.

The self-supported frame and floor are welded together prior to coating.



Shown in welded rod.



Available in expanded metal, woven wire, and welded rod.

### Installation is Quick and Easy

Contractors and customers familiar with Dura Trac flooring report that our Clearspan Nursery floors install more than seven times faster than clip-together hard plastic flooring. Construction can continue after Dura Trac flooring is in place.





# Dura Trac Original Nursery Floors

## For the Prevention of Floor Related Injuries



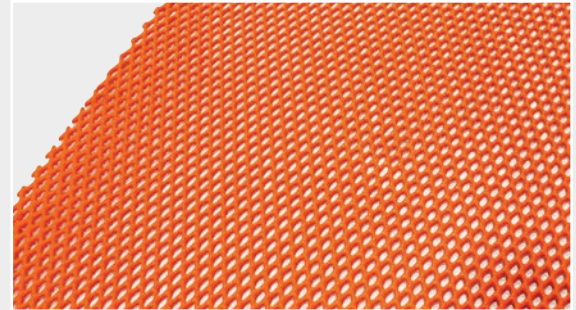
**Dura Trac Original Flooring** is unsupported and built to use with the customer's supports. Originals are an excellent choice for both innovative design and remodeling.

- All Dura Trac floors are completely coated with plastisol. No metal is exposed to moisture.
- Floors will never feel any colder than the room's ambient temperature.
- Dura Trac is designed for traction and the reduction of floor-related injuries.
- Cleaning is quick and easy, minimizing bacteria buildup.
- Because pigs are healthier, they reach market weight sooner.

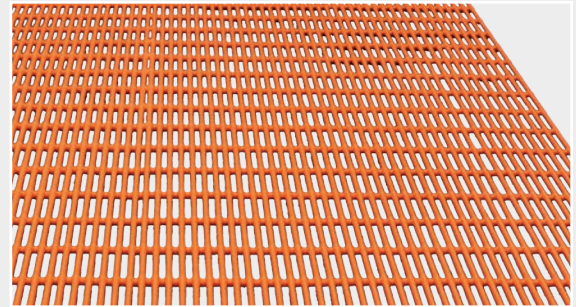
Some customizing options for Dura Trac Original Nursery floors include perimeter rod, notching, and holes.

We offer three standard sizes but can just as easily provide custom lengths and widths to fit in your available space. The standard sizes are 4' x 8', 5' x 7', and 5' x 8'.

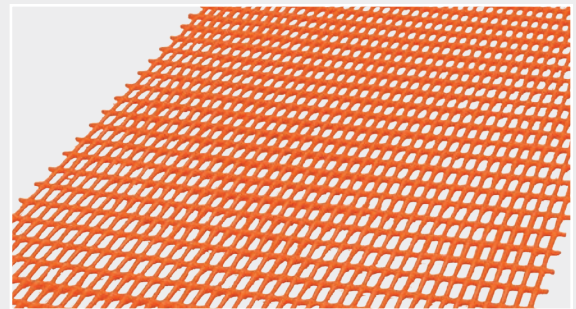
Some customizing options for the Dura Trac Original Nursery Floors include perimeter rod, notching, and holes.



Expanded Metal



Welded Rod



Woven Wire

### Proper Support for Original Dura Trac Nursery Floors

Supports must run laterally across the short way of the opening. The following minimum requirements apply:

- All Nursery floors - 16 inches apart
- Finishing expanded - 16 inches apart
- All Farrowing floors - 8 inches apart under the sow and 16 inches apart in the creep areas

### From a loyal Dura Trac customer:

*Dear ADA Enterprises, Inc.,*

*Kelly Farms has 1500 sows and has had Dura Trac flooring from ADA Enterprises under the creep areas in our farrowing crates for 21 years. We found your flooring to be simple and quick to install. We have been more than satisfied with its strength and durability. We have never needed to worry about flooring collapse or failure. We have found your flooring to be easy to clean, easy to inspect for cleanliness and gentle on the piglets. Healthy growth in our piglets has been aided by never having a problem with traction while nursing, nor loss of body temp to the plastic coated steel flooring that can occur in other types of flooring. We have two types of flooring for our weaned pigs up to 70 pounds.*

*We have Dura Trac flooring from ADA Enterprises and we have a clip together type of molded plastic flooring. The weaned pigs on the Dura Trac flooring consistently do better than the others. The difference, we believe, is the ability to more thoroughly clean the flooring from ADA. This flooring is also 21 years old.*

*Sincerely,*

*Sandra and Doug Redekop*





# **ADA ENTERPRISES, INC.**

## **Dura Trac Swine Flooring**



Phone: 641-324-1093  
Toll Free US & Canada: 800-533-6033  
Email: [sales@adaent.net](mailto:sales@adaent.net)

305 Enterprise Drive  
PO Box 77  
Northwood, Iowa 50459

[www.adaent.net](http://www.adaent.net)

**Plastisol Coated Steel Animal Products Since 1974**

© 2025 ADA Enterprises, Inc. All Rights Reserved ID: 2505