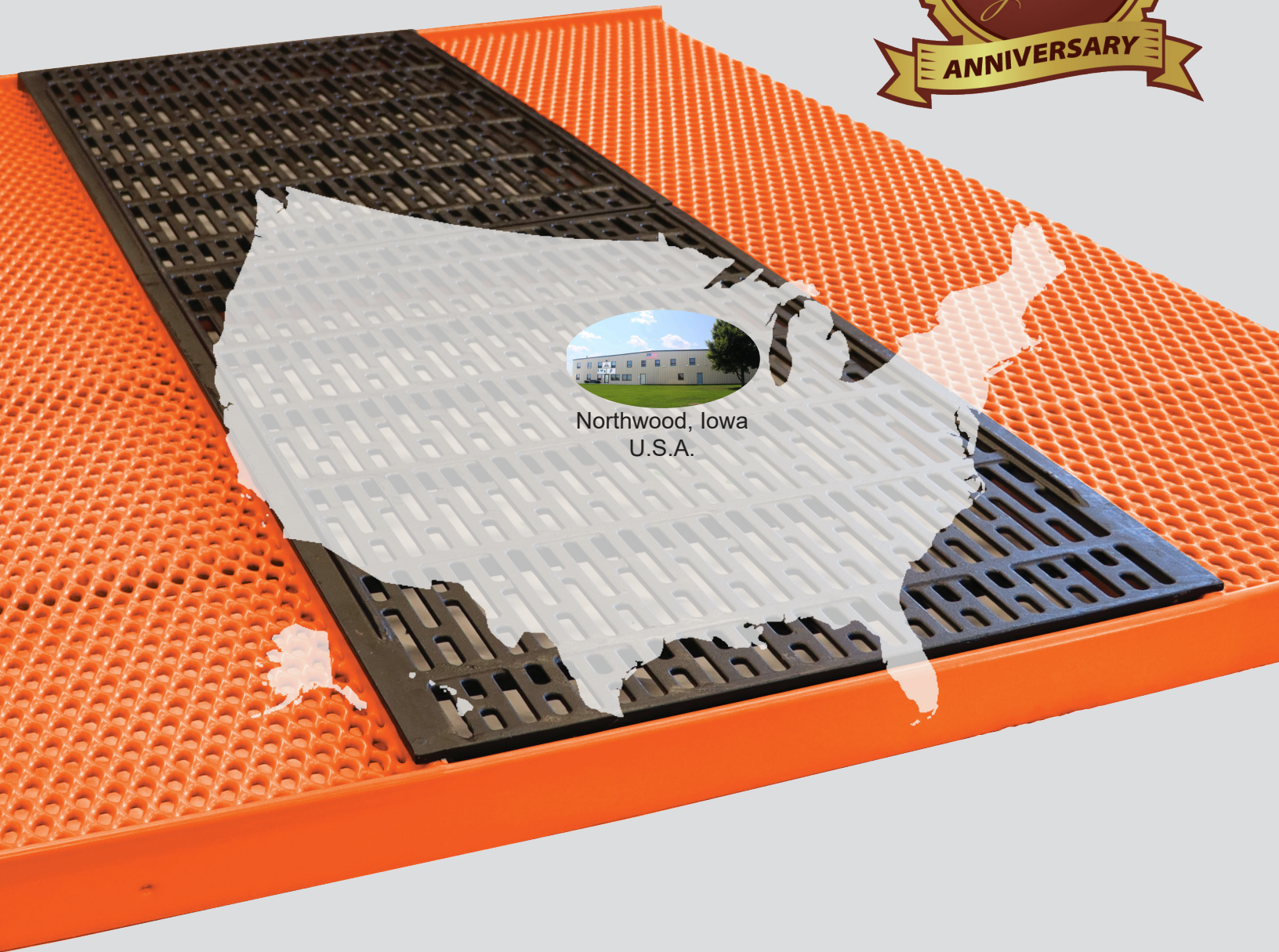




ADA ENTERPRISES, INC.

Dura Trac Swine Flooring

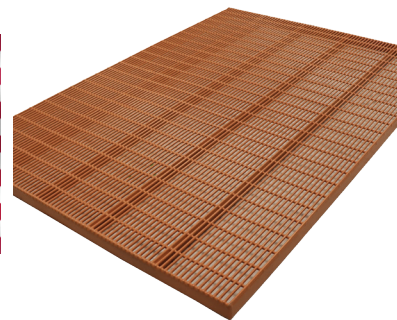
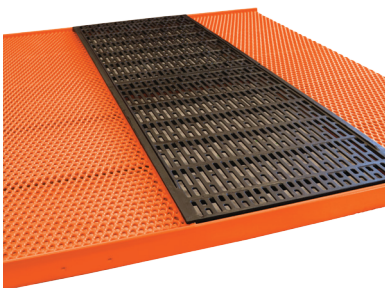
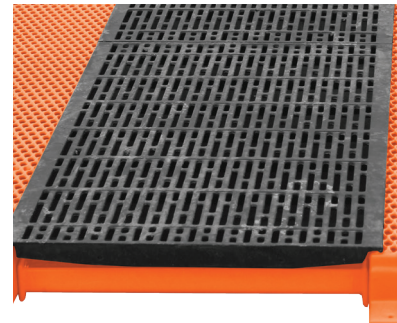
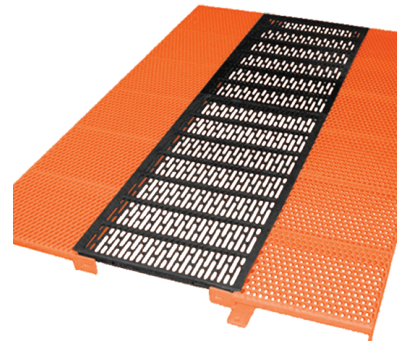
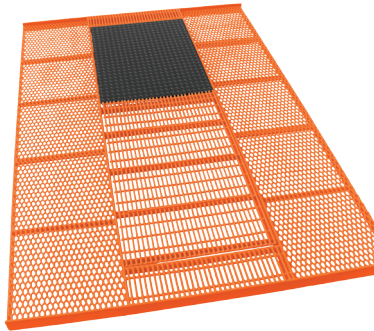


Northwood, Iowa
U.S.A.

Plastisol Coated Steel Animal Products Since 1974



Setting the Standard with Quality Animal Flooring



Flooring You Can Trust

Since 1974, ADA Enterprises has been leading the agriculture industry with quality products made to increase production, thereby increasing your bottom line. We believe that animal health and safety are vital for a profitable swine operation. The quality of our products and our customer service are second to none, which is evident in our many loyal and long-term customers. Dura Trac flooring is designed and built for your specific needs. Whether remodeling or building new, we have a floor solution for you. Our friendly and knowledgeable sales staff will work with you to design a flooring system specific to your needs.

NEW!



We are excited to announce that Dura Trac Swine Flooring now includes durable protection against E. Coli, Salmonella and other microbes!



Dura Trac Swine Flooring

Plastisol used by ADA Enterprises has been tested and confirmed by a world-renowned testing agency to inhibit the activity of *Escherichia coli* and *Salmonella enteritidis* by 99.99%.

- Built-in protection increases sanitation effectiveness while using normal cleaning practices.
- The only flooring manufacturer to take sanitation to the microbial level.
- Reduce your risk of disease by installing Dura Trac flooring with antimicrobial protection today.

This built-in protection is *not* an antibiotic, but an antimicrobial, which is much different. Antimicrobials inhibit the growth of microorganisms. Dura Trac flooring has antimicrobial protection and is antibiotic free.

A Proven Process

Dura Trac flooring is 100% plastisol coated with no exposed steel, therefore rust will not permeate through the coating. The process we use starts with prime steel. After cleaning and priming the welded floor, it is preheated to prepare a surface perfect for accepting the plastisol coating. The steel is then fully immersed in the liquid plastisol. Finally, the coated floor is cured in an oven for an extended time at high temperatures. The oven-cured surface is smoother and more resistant to bacterial and fungal growth than other floorings. Uniform curing creates stronger adhesion to the metal for a tougher surface with greater wear resistance. The strong Dura Trac flooring has been proven to aid traction and reduce floor-related injuries and is USDA accepted.

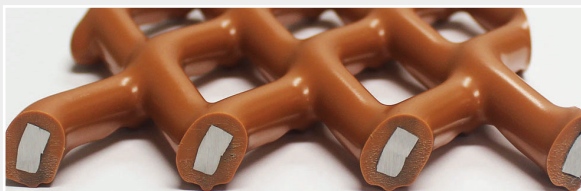


Dura Trac Swine Flooring

HEALTH • DURABILITY • TRACTION

DURAbility You Can Count On

All Dura Trac flooring is specifically designed to help keep animals warm, clean, dry, and comfortable. Profitability and animal health go hand in hand, and animals are healthier when these conditions are met. The mesh allows most of the fecal matter to fall through eliminating bacteria build-up, making it easier and more efficient to clean the floor.



Frequently Asked Questions:

How does the price of Dura Trac compare to other flooring?

The installed cost of Dura Trac is very similar to some of the cheaper alternative flooring systems, but with better results once installed.

What does installation involve?

Installation is very simple - just set the floors in place.

How quickly is the installation process?

Customers have told us installation takes as much as 1/10th the time of alternative systems! The remodeling of farrowing rooms needs to start with a flooring system before adding crates, waterers, heat mats/lamps, etc. For this reason, the fast installation of Dura Trac flooring is preferred. It can take days off the remodel time needed for each room.

Do we need to size the flooring with expansion and contraction in mind?

With Dura Trac flooring there is no concern for the complicated "coefficient of expansion" that is needed with properly installing the cheaper plastic clip-together products.

From Tom Stensrud, President/CEO:

"Because of the easy installation process of Dura Trac flooring, the reduced downtime of a remodel project quickly gets customers raising pigs again. We have customers that have met a schedule of a one-day remodel and don't miss a normal farrowing cycle."

A Delivery System Kit

"There is no reason that farrowing barn renovations have to force producers to miss weeks of production. The use of Dura Trac flooring with the "kitted" delivery system is derived from Lean Manufacturing principles similar to what we use in our factory. This photo shows a complete row for a farrowing room that will roll through a walk-in door and down the aisle. This "Lean" Flooring Kit system was recently used by a seven-man crew, and they were able to completely renovate 32 farrowing rooms (22 crates per room) each in less than an eight-hour day."

Thomas A. Stensrud, President/CEO



Dura Trac Clearspan Creep Sides

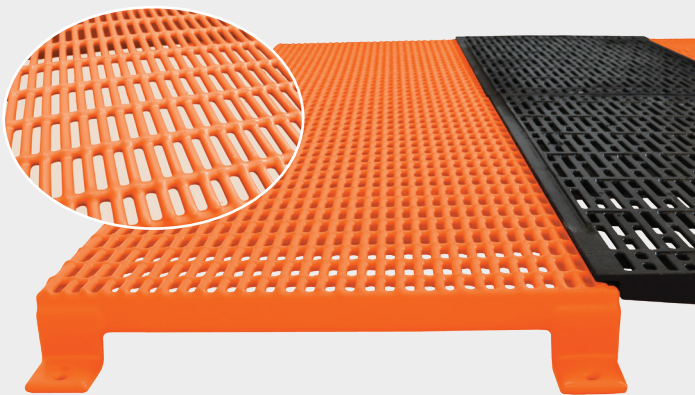
Flooring for Healthy Sows and Piglets



With any new construction, Dura Trac Floors can be set in place before the completion of the outside walls.



Expanded metal creep sides with recessed area for heat mat and cast iron centers.



Woven wire creep sides with cast iron centers.



Welded rod creep sides with cast iron centers.

Dura Trac for Healthy Sows and Piglets

The Clearspan Creep Side and Cast Iron Center is specifically designed to promote animal health and comfort. The creep side flooring keeps piglets warm and dry. The durable cast iron center keeps the sow cool and comfortable. The mesh of the plastisol-coated metal flooring allows most of the fecal matter to fall through eliminating bacteria build-up, making it easier and more efficient to clean the floor.

Hot water heat plates, solid plates, and recessed flooring to accommodate electric heat mats, as well as custom notches, pad positioners, mounting tabs, and feet are all available to modify the Clearspan Creep Side flooring.

Clearspan Creep Side flooring is completely self-supported and easy and efficient to install. They are built to your size requirements.

Advantages of the Clearspan Creep Side with Cast Iron Center

- Completely self-supported
- Cast Iron Center is cool and durable for sow comfort while piglets stay warm and dry
 - Convenient options to customize the floor to your needs
 - Easy, efficient installation

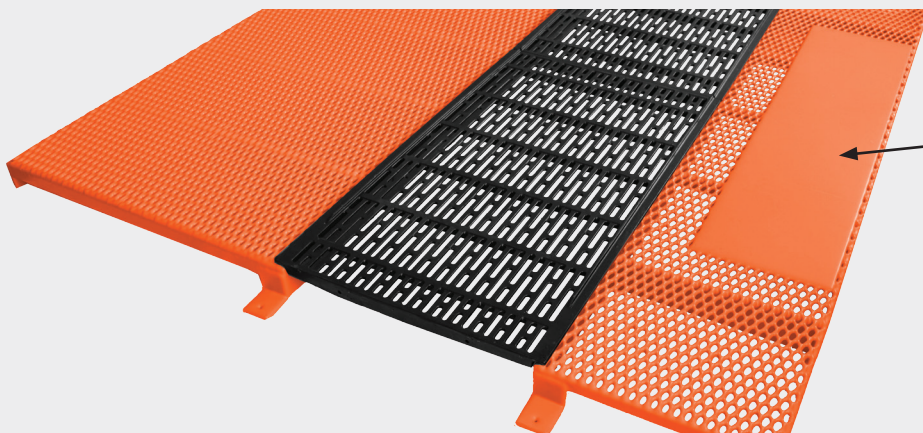
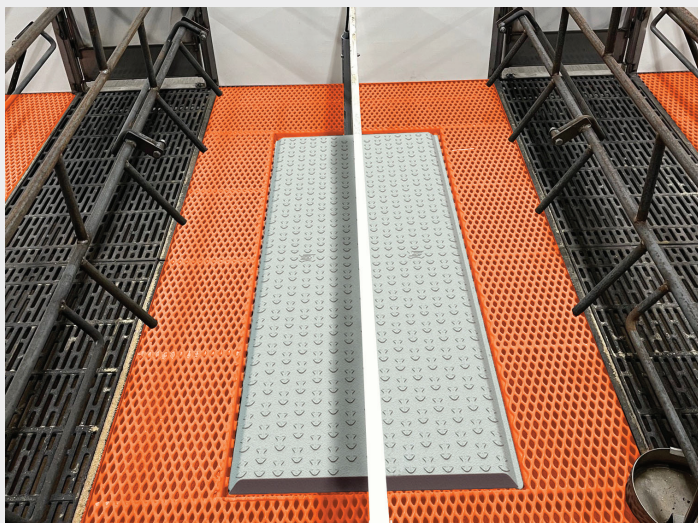


Dura Trac Options

For Piglet Comfort

Recessed Area for Heat Mat

The creep area shown below has a modified recessed area for the customer's heat mat without adding hardware. Piglets have easy access to the heat mat, but the sow is not able to cause damage by kicking it.



Solid Plate

Retain heat from heat lamps and reduce drafts on the piglets with the welded-on solid plate. Piglets stay continuously dry and warm. Plus, no more hassle of sanitation concerns related to rubber mats.



Hot Water Heat Plate

The Dura Trac Hot Water Heat Plate is used in the creep area so the piglets stay warm with uniform heat. It is flush-mounted for durability.



The bottom side of the hot water heat plate.

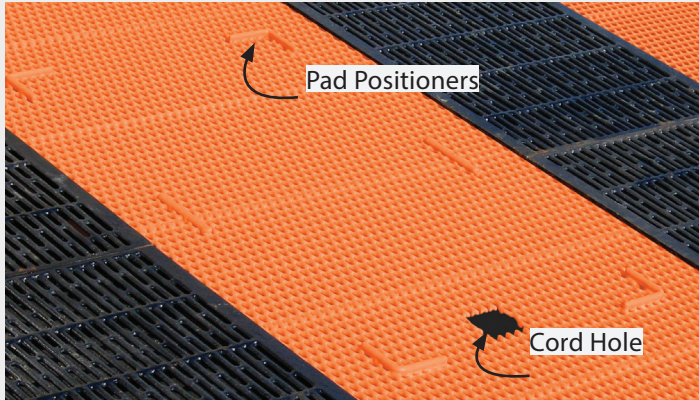
Standard sizes: 12-inch x 48-inch and 24-inch x 48-inch. Custom manufactured to fit most existing installations.

Dura Trac Clearspan Creep Sides

Optional Flooring Modifications



Many convenient options are available with Dura Trac Clearspan Creep Sides, including custom notches, pad positioners to secure heat mats, mounting tabs, and feet to elevate the floors above the alleyway. There are many available options for modifying the Clearspan Creep Side flooring.



Pad Positioners are an inexpensive way to help secure the heat mat and lessen the likelihood of a sow kicking the heat mat out.

Cord Holes can be cut in the flooring to allow heat mat cords to exit the crate with minimum exposure to the pigs.



Cast Iron Center will keep the sow cool and comfortable. Cast iron sizes available are 24-inch x 42-inch and 24-inch x 48-inch. The molded ridges on each side provide additional traction for the sow, while still allowing the front and back 6 inches to be scraped.



Tabs can easily fasten creep side to concrete surface.



6" Legs elevate Clearspan floors above alleyway. Custom sizes are available.



Side Tabs used to hold cast iron in place and for farrowing crates that bolt from the side.



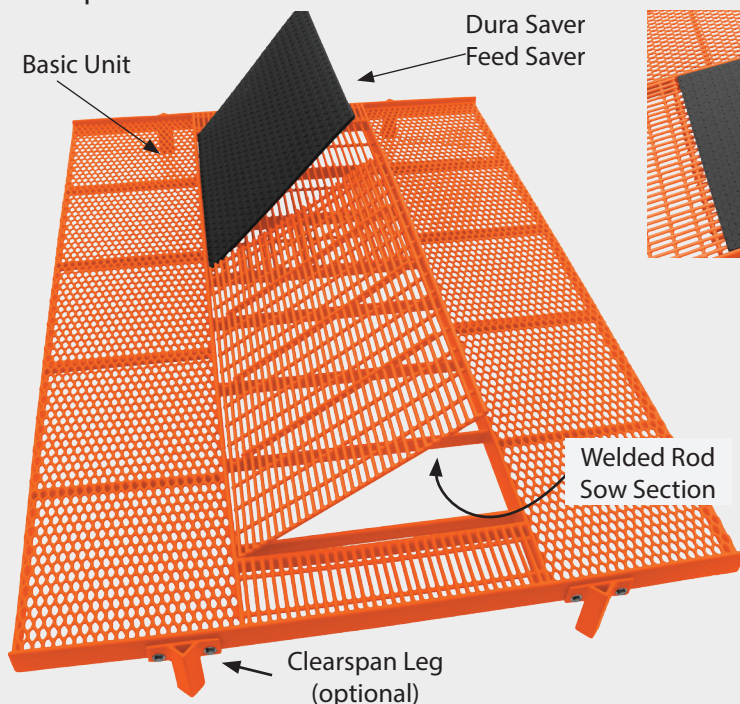
Creep Bar holds the creep sides at a distance from each other to keep the cast iron in position.



Dura Trac Clearspan Farrow Complete

Healthy Sows + Increased Weaning Weights = Larger Profit

Dura Trac is setting the standard in quality animal flooring! All floors are completely plastisol coated to conserve the pig's body temperature and reduce stress caused by cuts and bruises. Designed for traction, Dura Trac floors will reduce floor-related injuries. The floors are easy and efficient to clean, eliminating bacteria buildup.



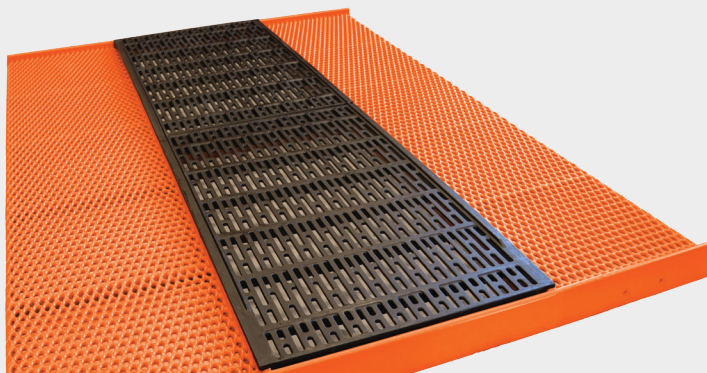
The Dura Trac Clearspan Farrow Basic Unit Complete

This complete flooring system includes the basic unit, a sow section with traction bars, and a Dura Saver with hardware. It is completely self-supported. A one-inch center rise reduces crushing and allows newborns easier access to underside nipples. The sow area is 24 inches wide - wide enough for the sow, but not so wide to lose advantage of the raised center. The wear areas are kept small and replaceable to minimize maintenance costs.

Clearspan Farrow with Cast Iron Center

The one-piece plastisol coated farrowing floor has an open center for two cast iron sow sections. The sow sections have ridges on each side for added traction.

Sow sections are available in 24" x 42" and 24" x 48". This allows for our cast to fit floors the lengths of 7', 7'6", and 8'. The floor pictured on the right is a 5'x7' raised Clearspan farrow basic unit.

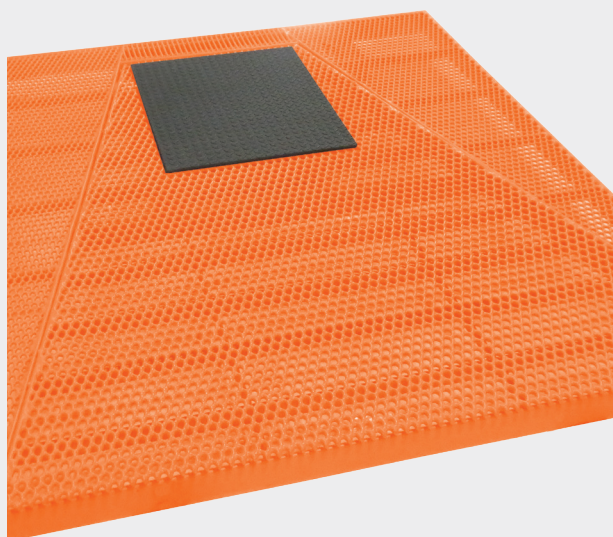


New for Turn-Around Crates!

The Clearspan Turn-Around Farrow is designed with a replaceable 'V' shaped center of durable, completely plastisol-coated, expanded metal.

Dura Trac Clearspan Farrow flooring designed for turn-around crates is similar to the Dura Trac Clearspan Farrow Complete, which has been a customer favorite for years. The Clearspan Turn-Around Farrow floor is completely self-supported. No additional support is necessary. Custom-built to your size requirements.

The Stockboard Feed Saver is an excellent wear-saver to place in front of the sow. Attach to the floor with feed saver hardware.



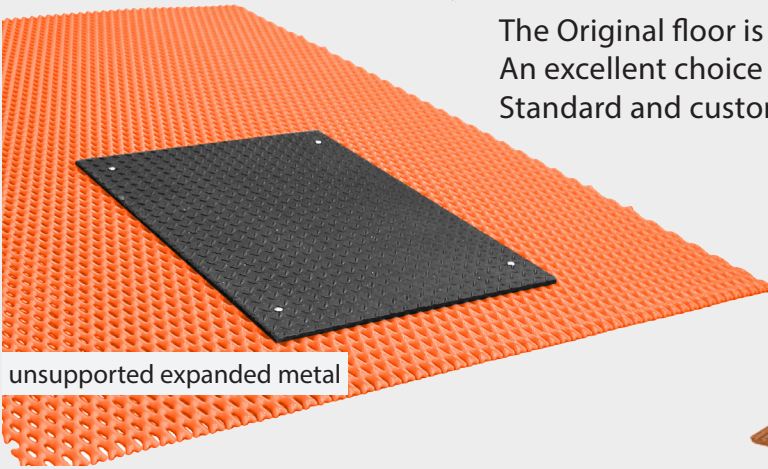
Dura Trac Original Farrow Floors

Great for New Building and Replacement Projects

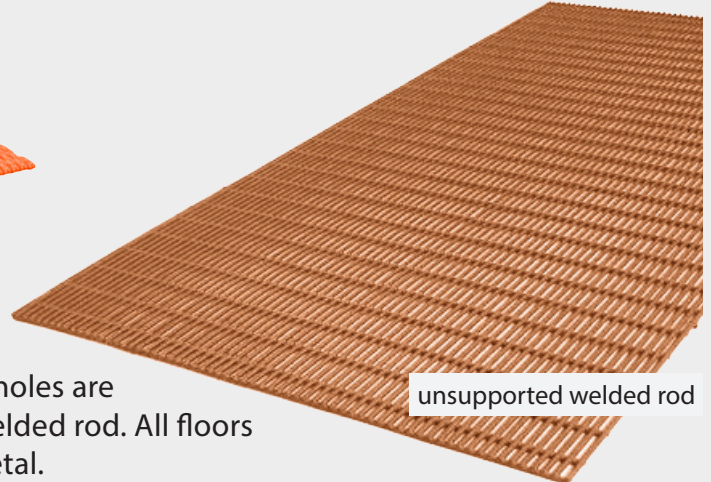


Benefits of Original Flooring

The Original floor is made to use with your supports.*
An excellent choice for both new buildings and replacement flooring.
Standard and custom sizes are available.



unsupported expanded metal



unsupported welded rod

Custom options such as perimeter rod, notching, and holes are available. Mesh styles include expanded metal and welded rod. All floors are coated with plastisol after cutting - no exposed metal.

The Dura Saver feed saver is also an option. It bolts on easily with Dura Saver hardware.

* Proper Support for Original Dura Trac Floors

Supports must run laterally across the short way of the opening. The following minimum requirements apply:

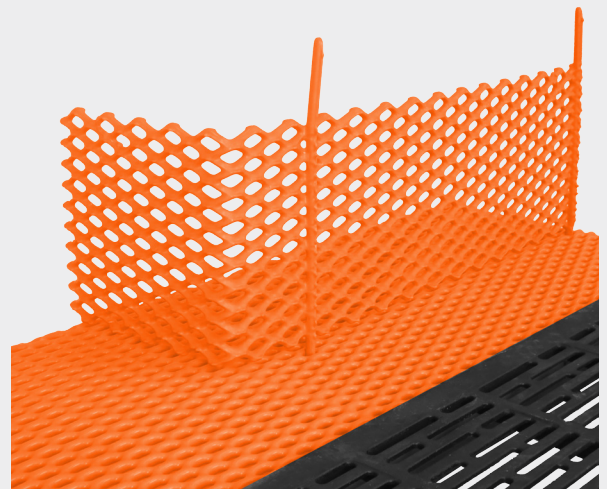
- All Farrowing floors - 8 inches apart under the sow and 16 inches apart in the creep areas
- All Nursery floors - 16 inches apart
- Finishing expanded - 16 inches apart

Split Suckling Divider

The completely plastisol-coated split suckling divider is a simple product that will separate the larger piglets from the smaller ones. This provides all piglets with a shared chance at nursing. The divider quickly lifts in and out of almost all farrowing floors including our competitor's flooring. With bars on both sides, you can put them in any corner of the flooring. No hardware is necessary.

Benefits of the Split Suckling Divider

- Decrease piglets' pre-wean mortality with an equal nursing advantage.
- Save time and money with this durable coated steel mesh divider that will last through countless litters.
- Eliminate the cracking, breaking, and replacing that is common with alternative split suckling methods such as pails and plastic totes.
- Easy to power wash! It can be left in the flooring when it's time to power wash the area.
- The size is 14" x 30" with a height of 10" not including the bars used to place it on the floor. An excellent accessory to Dura Trac flooring for the farrowing barn.





Dura Trac Clearspan Nursery

Promoting Healthy Pigs Through Design

Reach Market Weight Sooner

Because of the 1/8+ inch of plastisol coating, the Dura Trac Nursery floors stay warm and dry which helps in conserving the body temperature of the pigs. The floors are designed for traction, therefore reducing floor-related injuries. Your pigs will reach market weight sooner if they are in a safe and healthy environment. Dura Trac flooring provides the surface they need to grow and thrive.

The Clearspan Nursery floor is completely self-supported in all directions and no additional support is required. The frame and floor are welded together and completely plastisol (PVC) coated to prevent rust and corrosion.

Dura Trac Clearspan Flooring

Custom Clearspan nursery floors can be ordered in sizes up to 10 feet long and up to 6 feet wide.

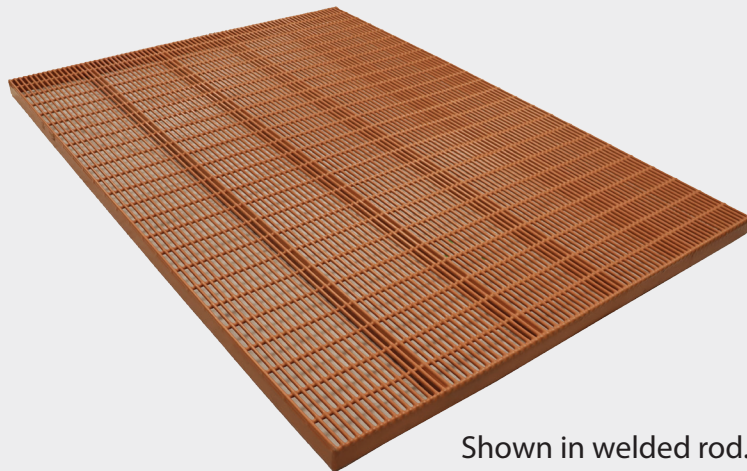
Convenient options are available to customize the floors to meet your needs, including:

- Open end for easier cleaning of the alleyway
- A trap door for access to the pit below without having to remove the complete penning system.

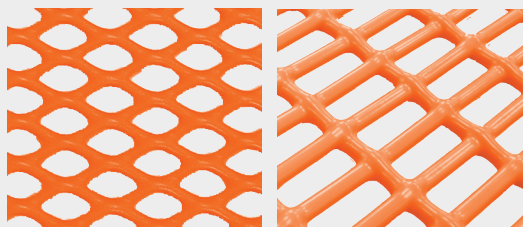
The standard outside supporting frame of self-supported swine floors varies according to size.

- For all sizes less than an 8' span, the frame is 3/16" x 2".
- Spans of 8' and less than 9' the frame is 3/16" x 2-1/2".
- With spans of 9' and less than or equal to 10' the frame is 3/16" x 3".

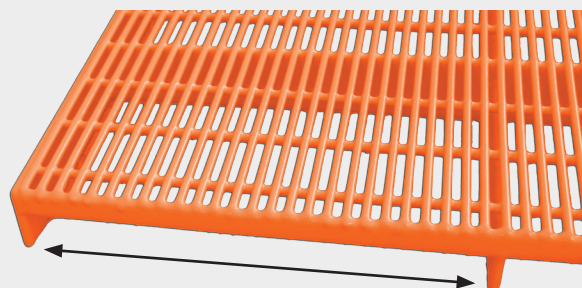
Dura Trac Clearspan Nursery Barn Flooring supports pigs up to 100 pounds each.



Shown in welded rod.

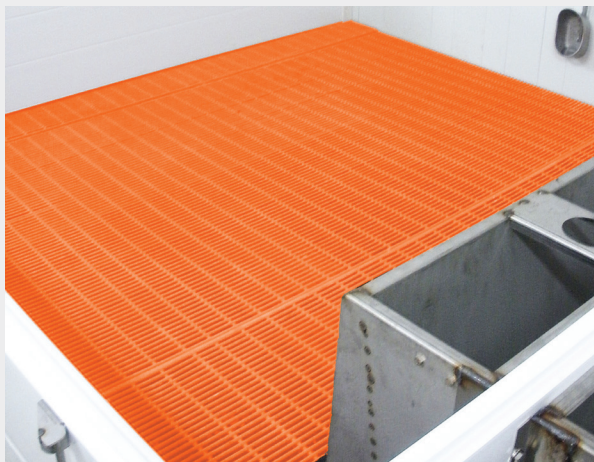


Also available in expanded metal and woven wire.



Clearspan Option: Open end for easy cleaning of the alleyway.

Installation is Quick and Easy



Contractors familiar with Dura Trac flooring tell us that our Clearspan Nursery floors install more than seven times faster than clip-together hard plastic flooring. Construction can continue after Dura Trac flooring is in place.

Dura Trac Original Nursery Floors

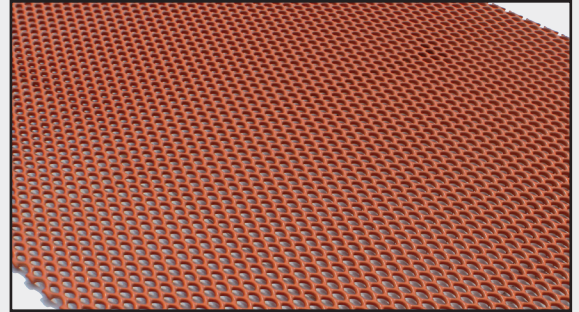
For the Prevention of Floor Related Injuries



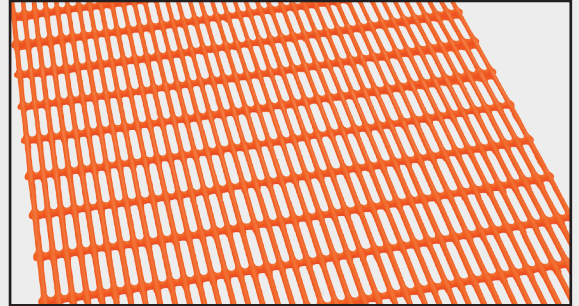
Dura Trac Original Flooring is unsupported and built to use with the customer's supports. Originals are an excellent choice for both innovative design and remodeling.

We offer three standard sizes but can just as easily provide custom lengths and widths to fit in your available space. The standard sizes are 4' x 8', 5' x 7', and 5' x 8'.

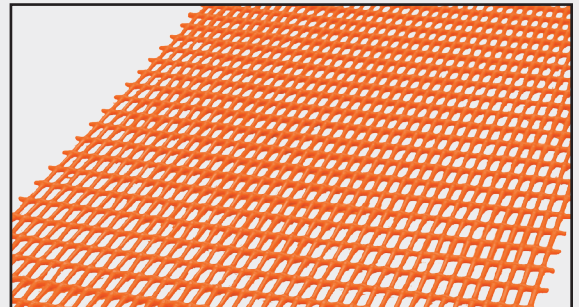
Some customizing options for the Dura Trac Original Nursery Floors include perimeter rod, notching, and holes.



Expanded Metal



Welded Rod



Woven Wire

Proper Support for Original Dura Trac Floors

Supports must run laterally across the short way of the opening. The following minimum requirements apply:

- All Nursery floors - 16 inches apart
- Finishing expanded - 16 inches apart
- All Farrowing floors - 8 inches apart under the sow and 16 inches apart in the creep areas

All Dura Trac floors are completely coated with plastisol; therefore, no metal is exposed. The coating ensures the floors will never feel any colder than the temperature in the room. Dura Trac nursery floors are designed for traction and the reduction of floor-related injuries. Cleaning is quick and easy, minimizing bacteria buildup. Because pigs are healthier, they will reach market weight sooner.

From a loyal Dura Trac customer:

Dear ADA Enterprises, Inc.,

Kelly Farms has 1500 sows and has had Dura Trac flooring from ADA Enterprises under the creep areas in our farrowing crates for 21 years. We found your flooring to be simple and quick to install. We have been more than satisfied with its strength and durability. We have never needed to worry about flooring collapse or failure. We have found your flooring to be easy to clean, easy to inspect for cleanliness and gentle on the piglets. Healthy growth in our piglets has been aided by never having a problem with traction while nursing, nor loss of body temp to the plastic coated steel flooring that can occur in other types of flooring. We have two types of flooring for our weaned pigs up to 70 pounds.

We have Dura Trac flooring from ADA Enterprises and we have a clip together type of molded plastic flooring. The weaned pigs on the Dura Trac flooring consistently do better than the others. The difference, we believe, is the ability to more thoroughly clean the flooring from ADA. This flooring is also 21 years old.

Sincerely,

Sandra and Doug Redekop





ADA ENTERPRISES, INC.

Dura Trac Swine Flooring



Proudly Made in the U.S.A.



Phone: 641-324-1093
Toll Free US & Canada: 800-533-6033
Email: sales@adaent.net

305 Enterprise Drive
PO Box 77
Northwood, Iowa 50459

www.adaent.net

Plastisol Coated Steel Animal Products Since 1974

© 2024 ADA Enterprises, Inc. All Rights Reserved ID: 2502